

Isère: Nowhere more natural



PRESS
KIT

WINTER
2021/2022



WWW.ALPE-ISERE.COM



NADINE CHEVALIER / +33 (0)4 76 00 33 51 / +33 (0)7 62 89 38 28
NADINE.CHEVALIER@ISERE-ATTRACTIVITE.COM

ALPES
IS HERE

REACH FOR THE HEIGHTS

© OTVILLARD

Press Contacts



ISÈRE ATTRACTIVITÉ
NADINE CHEVALIER
+33(0)4 76 00 33 51
+33(0)7 62 89 38 28
nadine.chevalier@isere-attractivite.com

Isère Attractivité
CS 10047
44, Quai de France
38024 Grenoble Cedex 1
France
www.alpes-isere.com

Editorial

WINTER... NATURALLY IN ISÈRE!

Welcome to Isère. So what can we expect this winter? Firstly, with mountains, three natural parks - Vercors, Chartreuse, Ecrins National Park - wide-open spaces, high peaks, glaciers, valleys and forests, Isère is a wonderful place to unwind, easily accessible from the big urban centres. Its wide range of benefits meet the growing demands of holidaymakers in search of well-being, with new experiences to share, fresh air and reconnecting with nature - all in complete tranquility. These unspoilt natural areas are technically not a secret, but discovering them fills you with awe.

Our 22 ski resorts are the gateways to these areas and are more ready than ever to welcome back ski and mountain lovers. For more than a year, they have been looking forward to this moment. Undoubtedly, they will do their utmost to make sure that your return will be spectacular, whether you plan to ski, sit back and watch, play, have fun and most importantly share unforgettable moments.

Between 800 m and 3,600 m, our spectacular mountains and the people of Isère are waiting enthusiastically with a big smile on their faces for you to share their land again. This year, more than ever before, Isère is getting ready to greet you for the big winter rendezvous.

Nowhere could be more natural.

Contents

P.2 MAP
P.4 EDITORIAL

A new season for mountain resorts

P.7 WHAT'S NEW?

Winter on the natural side

P.14 OUTDOOR ACTIVITIES IN THE MOUNTAINS
P.16 IMMERSION IN NATURE

See the mountain differently

P.18 UNUSUAL ACTIVITIES
P.19 A MOMENT OF WELLBEING: WELLNESS
AREAS & SPAS
P.20 ISÈRE'S SCENIC LOOKOUTS

Winter with the family

P.22 THINGS TO DO WITH THE FAMILY
P.23 FAMILY STAYS

Isère, a land of culture

P.25 GRENOBLE AND VIENNE, CLASSIFIED AS
CITIES OF ART AND HISTORY, ARE AT THE
HEART OF ISÈRE'S CULTURAL SCENE

Flavours of Isère : les produits régionaux

P. 27 EMBLEMATIC PRODUCTS

Calendar of major events

P.31 EVENTS AND EXHIBITIONS

Key numbers for winter tourism in Isère

The events calendar was established with all information available. It is subject to modification due to the Covid19 pandemic and government measures.

A new season for mountain resorts



© LAURENT SALINO

This coming winter season is the perfect time for an upgrade: new venues, new activities, new facilities. A few months before the first snowfall, Isère and every one of its tourist amenities will be ready to be the playground of choice for mountain lovers. For sports enthusiasts, leisure visitors, or families wishing to discover new cultural sites, the Dauphinois setting is sure to charm all those who set foot in the region. Here's an overview of what's new in Isère.

A NEW SEASON FOR MOUNTAIN

What's new ?

ACCOMMODATION

New residence Club MMV Les Clarines **** in Les 2 Alpes

OISANS - LES 2 ALPES

Opening Saturday 18 December 2021.

A new, high-end MMV residence, Les Clarines, will open in December 2021 opposite the new Super Venosc ski lift (Vallée Blanche sector) at the end of the Avenue de la Muzelle (central avenue of Les 2 Alpes). Offering 158 apartments from 2 rooms for 4 people and up to 5 rooms for 10 people, between 32m² and 91m², the fully equipped, comfortable flats are tastefully decorated in a modern style. Stays include the following services: access to a heated indoor/outdoor swimming pool, wellness and spa area, activity rooms, childcare from 4 to 15 years old (kid's teams), ski shop and heated ski room, and, as an optional extra, a bakery service, breakfast service, grocery delivery, and catering delivery. **04 92 12 65 30**

www.mmv.fr/contacts

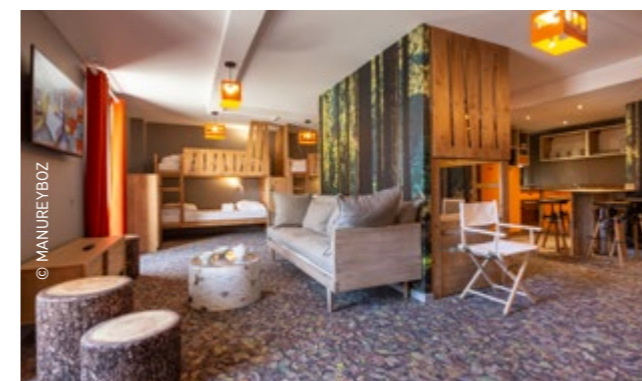
The Belambra complex in Les 2 Alpes gets a makeover

OISANS - LES 2 ALPES

The Belambra complex, on the summits of Les 2 Alpes at an altitude of 1800 m, has been completely renovated. The holiday club gives a much-needed boost to the upper sector of Les 2 Alpes village. An entire economy and local life will once again take shape. The Village 1800, designed in the 1980s, was built on the former aerodrome site of Les 2 Alpes. For many years, it provided an innovative concept of car-free snow holidays. This winter, the concept will be reviewed in line with sustainable development and the environment.

It will reopen in December 2021. **04 76 79 24 38**

booking.les2alpes.com



© MANUREYBOZ

New Base Camp Lodge hostel in Les 2 Alpes

OISANS - LES 2 ALPES

Due to open 10 December 2021.

Following the opening of The People Hostel at the entrance to Les 2 Alpes, a second hostel is due to open at the far end of the resort: the Base Camp Lodge, occupying the former Hôtel des Champions. The four-storey hostel has 30 rooms from shared rooms (max. 10 people) to double/twin rooms, a master suite or family suite of 40m². The style and décor is a combination of alpine, designer, wood, metal, sleek and with a pioneer spirit! It is complemented with a restaurant serving vegan, vegetarian, alpine and meat dishes, a fitness room, sauna, ski room, conference room (seminars, business centre). **04 79 31 18 64**

www.basecamlodge-les2alpes.com

Hotel Pop Alp *** in Alpe d'Huez

OISANS - ALPE D'HUEZ

With its colourful balconies adorned with a hundred or so brightly coloured skis, the hotel is sure to put a smile on your face. Even the hotel's sign, in pop art style, is a twist on the Alpe d'Huez logo. Once inside, a universe of pop art harks back to the 1960s. The Pop Alp hotel is designed as an exhibition - a contemporary art gallery with murals, sculptures and about 50 original paintings created especially for the hotel. Each of the 28 rooms is unique.

www.alpedhuez.com

Les Chalets de Pré Genty

OISANS - OZ-EN-OISANS

The Chalets de Pré Genty are made up of eight large-capacity chalets, four of which sleep more than 20 people, rated 3* with a sauna and Jacuzzi or hammam. Near the ski lifts and the centre of the resort, where you can ski back, these are the perfect spot for a mountain getaway with family or friends. The chalets (up to 375 m²) offer an exceptional and unobstructed view of the Belledonne mountains. With a cosy, mountain-style interior, the spacious and bright living rooms come with a fireplace and a terrace. The location is ideal at the meeting point between the slopes and the resort. Chalets equipped with Jacuzzi and sauna, room service, catering or fitness room are available upon reservation.

www.chaletsoz.com

A new Alp'Auris*** Tourist Residence

OISANS - AURIS EN OISANS

Designed with an eco-friendly approach, the brand new Alp'Auris*** Residence is high up at an altitude of 1600m in the heart of the resort of Auris en Oisans. With a magnificent south-facing aspect in the Grandes Rousses mountains, the Alp'Auris*** looks out over the spectacular panorama of the Oisans mountains, the Meije and its glaciers. The accommodation is well-equipped for a holiday for 4 to 8 people. Guests will also find an indoor swimming pool with a small and large pool and a wellness area with a sauna and a hammam. [04 79 75 75 20](tel:0479757520)

reservations@vacanceole.com

La Tanière, Chambres d'Hôtes in Vaujany

OISANS - VAUJANY

Overlooking the mountain, this south-east facing chalet has a sunny garden with furniture and tables for lunch (in summer). Spread across four floors - ground floor and three upper floors - each is either partly or completely reserved for guests. The property has four bedrooms with en-suite shower rooms. Twice a week, the hostess prepares a table d'hôte menu, with dishes made from fresh, seasonal products. On request, free loan of baby chairs and cots, board games and books. [06 21 34 12 87](tel:0621341287)

www.lataniere38.com

La Bâtie and La Loge, in Vienne

VIENNE

More than a B&B, La Bâtie offers the comfort of a hotel and the warmth of a personalised welcome in a charming venue. This small medieval tower has its own entrance and can accommodate two people, with a total surface area of 40 square metres. The Loge is a penthouse flat with a breathtaking view of the city and the Rhône river below, promising an unforgettable stay in a charming property. Below the medieval castle of La Bâtie, on the hillside of Mont Salomon, these furnished apartments offer a 40 square metre duplex and a 60 square metre rooftop, each with a private terrace. The city centre is within 10 minutes walk; the car park is enclosed and secure.

www.labatie.fr

RESTAURANTS & ACTIVITIES

Jeanette: the modern bistro in Grenoble

GRENOBLE

Jeanette bistro opened its doors at the end of 2020 in Championnet, the heart of Grenoble's arty district. Manon and Thais offer eco-responsible, authentic cuisine that respects seasonality. The two young women met in the kitchens of the Corne d'Or and favour local products, a short food supply chain and have built up a whole network of producers. Helping to supply them are seven market gardeners: organic meat and goat's cheese from Ferme de Rony (Saint-Nizier-du-Moucherotte); fruit and herbal teas from Revel (Belledonne); and organic sourdough bread from Pain des Cairns (Grenoble). As for drinks, the wines on the blackboard are produced as naturally as possible, without chemicals or synthetic products.

www.jeanette-restaurant.fr

Camp de Base: the first Alpine food court in Alpe d'Huez

OISANS - ALPE D'HUEZ

Opening December 2021

A new concept is launching in December 2021 in the heart of Alpe d'Huez on the Avenue des Jeux. Set in a mountain environment, it will offer a variety of entertainment, drinks, food, games and music daily during the winter and summer seasons. This welcoming place resembles a food hall with six food counters (burgers, Asian cuisine, pizza al taglio, savoury waffles, veggies, charcuterie boards, cheeses etc.) and a central bar. On the menu are local products, specially selected wines, cocktails and drinks for all tastes.

Enjoy après-ski from 4 pm to midnight at this new Alpe d'Huez landmark. [06 89 99 04 46](tel:0689990446)

www.campdebase.ski



The forest of Piégut: a new ethnobotanical trail in Auris en Oisans

OISANS - AURIS-EN-OISANS

Walkers with or without snowshoes can enjoy a breath of fresh air on one of the groomed paths in Auris - the Piégut forest. The play of light through the snow-laden branches, animal tracks, summits that reveal themselves as you walk by... it's as if you were in Canada!

Take a walk in one of the largest and most beautiful spruce forests in Europe on foot, snowshoe, with sled dogs or on a fat bike. Follow Jacques the Woodcutter, the mascot of the Corniche trail, and have fun discovering the treasures and secrets of the Piégut forest: its plants, their traditional and modern uses, and the role that the forest has played and still plays for the inhabitants of Auris. This trail is part of a wider initiative to educate people about the environment, to promote local knowledge and to develop the area, which offers both a remarkable natural heritage (classified as a Natura 2000 area) and a valuable cultural legacy (the historical role of the Auris people).

Visitors can pick up a map of the route with all the relevant information. [04 76 80 13 52](tel:0476801352)

www.auris-en-oisans.fr

info-auris@oisans.com

NEW FACILITIES IN SKI RESORTS

Les 2 Alpes

OISANS - LES 2 ALPES

The newly appointed ski lift operator SATA 2 ALPES is planning to modernise and develop Les 2 Alpes ski area from winter 2022. This will be its first winter in operation in Les 2 Alpes. A number of developments are planned for the coming years. and while the health crisis has hampered the progress of certain projects, future investment is significant: €150 million is earmarked by the new SATA 2 Alpes company over the next three years.

The two biggest developments for winter 2021/2022 are:

- A new gondola lift from Super Venosc to the Vallée Blanche sector,
- The 6-seater Diable chairlift will become a telemix (mix of chairs and cabins) designed to provide easier access for everyone.

The Eau d'Olle Express: a new-generation valley lift in Oz-en-Oisans

OISANS - OZ-EN-OISANS

Only 40 minutes from Grenoble, the Eau d'Olle Express gondola links the village of Allevard in the valley to the mountain resort of Oz-en-Oisans. The journey takes just 8 minutes (instead of 25 by car). This new facility is considered to be public transport and follows a policy of sustainable development by limiting the daily flow of cars up the mountain. In the winter of 2020-2021, the gondola only operated for pedestrians. In 2022, it will finally welcome skiers who want to enjoy the slopes of Alpe d'Huez Grand Domaine ski area.

www.oz-en-oisans.com

ECO-FRIENDLY & SUSTAINABLE INITIATIVES

CHAMROUSSE, awarded the Flocon Vert label

BELLEDONNE - CHAMROUSSE

Chamrousse is committed to showcasing the benefits of nature and as such has a high regard for it. The resort has therefore set up several «green» initiatives to protect its fauna and flora. To help preserve the environment within this Sensitive Natural Area (ENS), the commune has appointed a green warden whose job is to educate and inform visitors about the rules of the mountains and what to do in sensitive natural areas, and whose aim is to promote its natural areas.

The town also created the Chamrousse Propre (Clean Chamrousse) event, taking place in spring, which increases employee awareness and training in the resort. Initially Chamrousse took part in Mountain Days (an initiative to collect waste in the mountains), which was replaced in 2021 by the «Montagne Zéro Déchet» (Mountain Zero Waste) programme. To raise awareness of waste reduction at source, this year Chamrousse stepped up its efforts by creating new ways of raising public awareness and using educational kits and games to support and train local community members. A public awareness campaign has also been launched for the summer of 2021. [07 71 18 90 44](tel:0771189044)

maison.environnement@chamrousse.com

ALPE D'HUEZ

OISANS - ALPE D'HUEZ

Each day, the resort of Alpe d'Huez strives to reduce its impact on the environment to protect its privileged natural setting and to raise awareness among both holidaymakers and residents alike.

- Since 2005, 150 pylons and 50 kilometres of cable have been removed to reduce visual pollution and the impact on the landscape.
- Following every new development, the area is returned, landscaped and trees planted.
- To limit light pollution, public lighting is switched off from midnight to 6 am in the off-season and from 2 am to 7 am in high season.
- The summer pasture is home to a herd of 2,000 sheep and 280 cattle supervised by two shepherds. Summer grazing avoids the need for mechanical maintenance of the soil and also limits the risk of avalanches in winter. It also reduces the volume of grass on the ground and so prevents large snowfalls from sliding.
- The first hybrid bus in the French Alps, Resalp shuttle bus runs in the resort in summer and winter to reduce fuel consumption and help limit greenhouse gas emissions.
- Alpe d'Huez has the highest greenhouses in France. The 2,000 perennials and 1,200 annuals that grow here allow the resort to bloom all year round.

GRENOBLE

GRENOBLE, EUROPEAN GREEN CAPITAL IN 2022

The title of European Green Capital is awarded each year to cities that demonstrate a strong commitment to the environment and sustainable development. Grenoble is already well known for its programme of activities, events and conferences for the general public. The title of European Green Capital is a real opportunity to strengthen the appeal of the region, but mostly to speed up the process of regeneration and improve the sustainability of our Alpine environment. The application submitted by Grenoble and its partners impressed the jury with its enthusiasm, vision, ability to engage the various regional stakeholders and its capacity to inspire other cities.

www.grenoble.fr

Green & eco-friendly initiatives

Twenty-two resorts, four different environments... Nature lovers, fans of incredible skiing, parties under snowy summits, or those who want to share unforgettable moments with their family, are sure to find the perfect resort in Isère.

THE SPIRIT OF NATURE

Autrans-Méaudre en Vercors

Nordic excellence

VERCORS - ALTITUDE: 1050 M - 1650 M

Autrans-Méaudre en Vercors is both an alpine and Nordic ski resort in the heart of the Vercors Regional Natural Park. The Autrans and Méaudre ski areas are ideal for beginners, those who want to improve and those who enjoy skiing with family or friends at a reasonable price. With 130 km of runs, the Nordic domain is a leader in cross-country skiing and Nordic activities and rivals the most beautiful European destinations. The Foulée Blanche event, which brings together thousands of cross-country skiers every year from beginners to the elite, celebrated its 40th anniversary in 2018.

Villard-de-Lans / Corrençon-en-Vercors

An exceptional ski area, in harmony with nature

VERCORS - ALTITUDE: 1100 M - 2050 M

A ski resort since 1906, Villard de Lans-Corrençon-en-Vercors guarantees outstanding skiing by offering one of the largest combined alpine/Nordic ski areas and a varied range of runs for all levels. Villard de Lans is a lively resort, well-equipped with sports and leisure facilities, offering a wide range of activities. A few kilometres away, Corrençon has the charm of a small, peaceful mountain village. Here, hosting families is a genuine passion: Villard de Lans-Corrençon has been proudly displaying the Famille Plus Montagne label since 2006.

www.villarddelans.com

L'Alpe du Grand Serre

A high-altitude domain at an unbeatable price

MATHEYSINE - ALTITUDE: 1368 M - 2180 M

Alpe du Grand Serre offers activities that respect the bountiful nature that surrounds it. Marked or freeride itineraries, beautiful snowshoeing or ski touring excursions delight lovers of wide-open spaces. Everywhere you look, you can see snow, the slopes of the Grand Serre, the summits of the Vercors, the Oisans, the Dévoluy, blue skies and sunshine as far as the eye can see. The Alpe du Grand Serre is an idyllic spot for a dream holiday. Far from the crowds of the big resorts, young and old, beginners and experienced skiers alike can ski in complete tranquillity.

www.alpedugrandserre.info

Le Sappey-en-Chartreuse

Family skiing 15 minutes from Grenoble

CHARTREUSE - ALTITUDE: 1000 M - 1370 M

The closest village resort to Grenoble, at an altitude of 1,000 m, Le Sappey-en-Chartreuse offers a wide range of winter activities. Ideal for family skiing, it welcomes skiers of all abilities. The resort is also one of the three gateways to the Chamechaude Nordic area.

www.grenoble-tourisme.com

www.chartreuse-tourisme.com

Saint-Pierre de Chartreuse/ Le Planolet - Domaine

Cœur de Chartreuse

The largest ski area in the Chartreuse

ALTITUDE: 900 M - 1789 M

Cœur de Chartreuse offers skiing that will appeal to both beginners and experienced skiers looking for adventure in a truly spectacular setting. In the hamlet of Saint-Hugues, the family-friendly resort of Les Égaux is an ideal area for learning to ski downhill in complete safety at a reasonable cost. For Nordic ski enthusiasts, the vast area offers more than 50 km of runs through magnificent spruce forests. Don't miss the marked ski touring itinerary leading to the summit of the Scia. You're guaranteed a great outdoor experience.

www.chartreuse-tourisme.com

FIRST TRACKS & CULTIVATING CHAMPIONS

Gresse-en-Vercors

A playground for the whole family

VERCORS - ALTITUDE: 1250 M - 1751 M

Gresse-en-Vercors is the gateway between the Trièves and the Vercors Regional Nature Park and offers a wonderful playground for the whole family in an outstanding setting. Alpine skiing, Nordic skiing, snowtubing and tobogganing, with snowshoeing or even stargazing, the resort offers something to suit everyone's wishes and desires.

www.gresse-en-vercors.fr

Lans-en-Vercors / Saint-Nizier-du-Moucherotte

All kinds of skiing in a magnificent panorama

VERCORS - ALTITUDE: 1400 M - 1807 M

Lans-en-Vercors is THE family resort par excellence in the Vercors. Here, everyone can practise the sport of their choice: downhill skiing, cross-country skiing, snowboarding, sledging, snowshoeing...and relish the joys of the snow, always at low prices.

Not far from Lans, at the entrance to the Vercors Regional Nature Park, Saint-Nizier-du-Moucherotte, the highest village in the Vercors, offers a unique view of the Alps. A ski lift in the centre of the village serves two ski slopes; ideal for that first introduction to the thrill of sliding.

www.lansenvercors.com

Auris-en-Oisans

The family resort of the Alpe d'Huez-Grand Domaine

ALTITUDE: 1165 M - 3330 M

The resort of Auris, high on the south side at an altitude of 1600 m, facing the Meije and its glaciers, enjoys 300 days of sunshine a year. Its appeal lies in its family-friendly character while being linked to the Alpe d'Huez Grand Domaine ski area. Peaceful, yet lively, families find it particularly attractive with numerous kids facilities and activities.

www.auris.fr

RIDERS & CO - THE GREAT OUTDOORS

Les 2 Alpes

2,300 m vertical drop in one go

OISANS - ALTITUDE: 1300 M - 3600 M

More than one million skiers come to Les 2 Alpes every winter! Dynamic, young, sporty, international and stylish, the resort is one of the great winter sports resorts of the French Alps. Great skiing, long vertical drops (2,300 m in one go without taking a single lift), guaranteed snow (glacier at 3600m), special events, a freestyle area for all ages (2 Alpes Freestyle Land), unbeatable off-piste areas. The ski resort offers a playground tailored to everyone's needs with a vast range of experiences.

www.les2alpes.com

Les 7 Laux

The largest ski area in the Belledonne chain

BELLEDONNE - ALTITUDE: 1350 M - 2400 M

A renowned spot for freeriders, the resort offers a huge variety of skiing and specifically, safe access to the legendary Pra valleys, an exceptional wilderness area that has become a secure, signposted area that preserves the character of this high-altitude territory.

www.les7laux.com

Villard-Reculas

The authentic village of the Alpe d'Huez Grand Domaine

ALTITUDE: 1500 M - 3330 M

Villard-Reculas is a mountain village with traditional charm, whose stone and wooden chalets rise up from the mountain pastures. Facing south, it offers an exceptional panorama of the high summits of the Oisans. The first resort to be linked to the Alpe d'Huez Grand Domaine ski area in 1946 thanks to the construction of one of the first ski lifts, Villard-Reculas quickly followed in its neighbour's footsteps and developed its own ski area.

www.villard-reculas.com

Oz-en-Oisans

The family resort with back to resort skiing

ALTITUDE: 1125 M - 3330 M

The resort in the heart of the Oisans mountains is directly linked by cable car to Alpe d'Huez Grand Domaine ski area. Nestled among the fir trees, it offers a breathtaking view of the Belledonne range. Oz-en-Oisans is also a bustling resort with a variety of activities to try: Nordic walking, dog sledding, new snow sports and experiences in the company of mountain professionals: ice climbing, telemarking, night-time outings, and more.

www.oz-en-oisans.com

NIGHT & DAY

Alpe d'Huez

Exactly 300 days of sunshine and festivities every year

OISANS - ALTITUDE: 1450 M - 3330 M

The resort of Oisans is perched on a south-facing plateau at an altitude of 1,860 m, like an «island in the sun». Its ski area, Alpe d'Huez Grand Domaine, is a huge playground with 250 km of runs, spread between Alpe d'Huez, Huez, Auris, Oz-en-Oisans, Vaujany and Villard Reculas, with a vertical drop of over 2,200 m.

The resort is also the scene of the legendary Folie Douce cabaret and the Tomorrowland electro festival, scheduled for March 2022.

www.alpedhuez.com

Vaujany

The village resort that combines tradition and innovation

OISANS - ALTITUDE: 1125 M - 3330 M

In the heart of the Oisans, Vaujany combines the charm and warm atmosphere of a village resort with a fantastic playground thanks to quality infrastructures (aquatic centre, spa, indoor ice rink, etc.) and events organised throughout the year. Linked to the Alpe d'Huez Grand Domaine ski area, it offers plenty of ways for families and friends to spend time together.

www.vaujany.com

Chamrousse

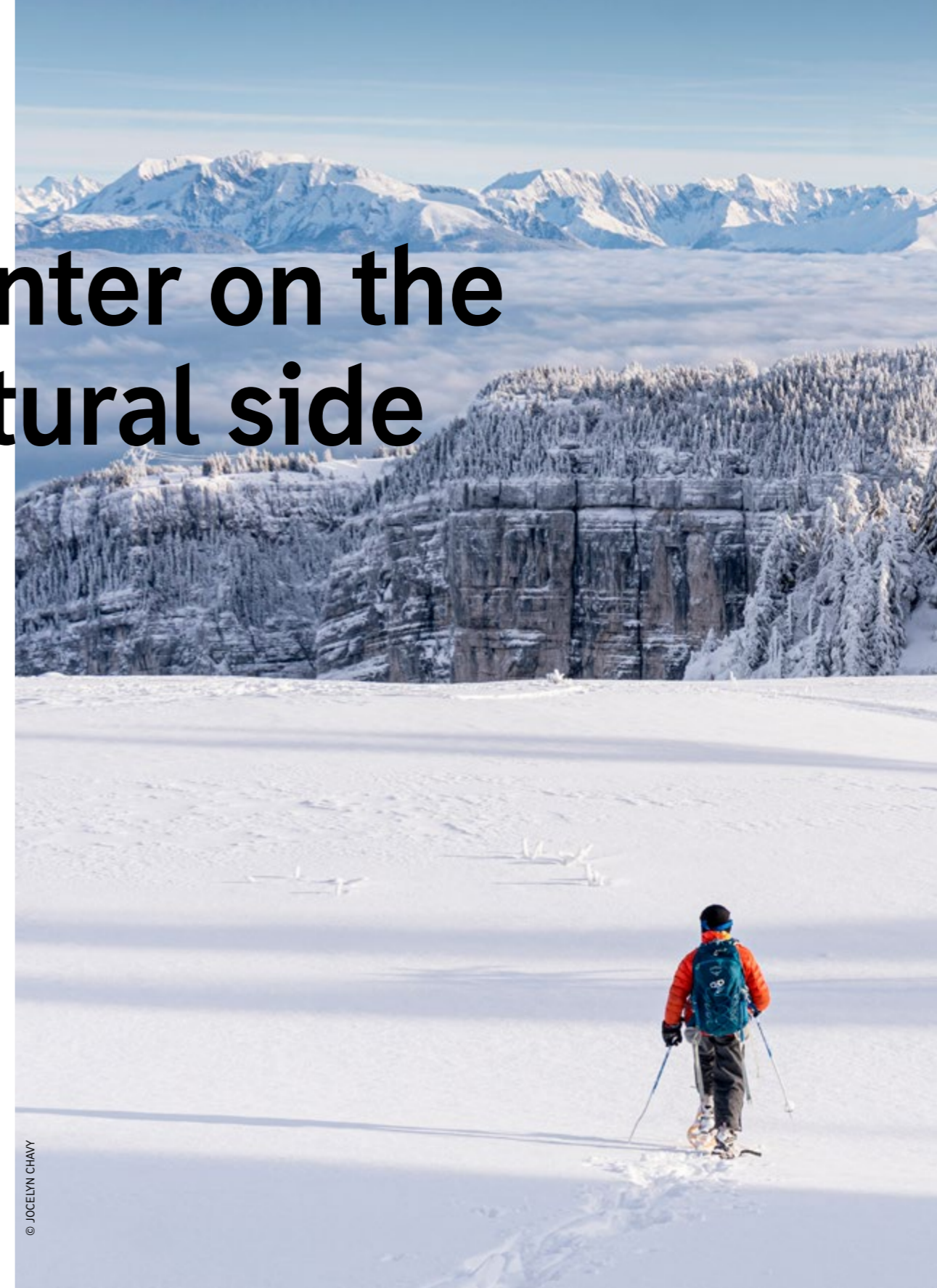
A night skiing area at 2,000 m above Grenoble

BELLEDONNE - ALTITUDE: 1400 M - 2250 M

Chamrousse is the resort for a quick and easy escape, only 30 km from Grenoble and 1.5 hours from Lyon. A few minutes is all it takes to reach an extraordinary natural area at the gateway to the high mountains and enjoy a «panoramic» ski area offering varying perspectives. In the evening, skiing with views over Grenoble is a magical experience.

www.chamrousse.com

Winter on the natural side



© JOCELYN CHAVY

Isère, where nature is closely connected, is a land deeply rooted in the territory's DNA. In winter, Isère's mountains range from 800 m to over 3600 m on a variety of levels from the valleys, plateaus and forests, to snow-covered slopes and glaciers that reach the summits. In Isère, unspoilt nature is waiting to be discovered at the gates of our mountain resorts. Whichever massif you choose - Chartreuse, Belledonne, Vercors, Oisans - whether from Grenoble or Lyon, if you love genuine, unforgettable places, then this is an opportunity not-to-be-missed. Once here, you'll discover or rediscover activities that are in complete harmony with nature: ski touring, Nordic skiing, snowshoeing, dog sledding, Nordic walking, yoga, And simply being able to walk in a precious landscape taking the time to marvel at it is a gift offered by these magnificent natural landscapes.

Outdoor activities in the mountains

Isère: moderate altitude and health, the perfect combination

The mountainous topography and numerous villages and resorts of the Isère department make the area perfectly suited to the research into positive impacts of altitude on health. Health and well-being are deeply rooted in the history of Isère, with the development of air conditioning and thermalism in particular.

In the coming years, this theme will be a major focus of the region's research and the heart of the strategy of the department's destination agency - Isère Attractivité - thanks to the partnership with the Hypoxia Physiopathology (HP2) INSERM laboratory at Grenoble-Alpes University and the Mountain Altitude Health academy of the Grenoble-Alpes University Foundation.

The «Altitude Health» project will study the potential benefits of living and staying at moderate altitude - around 1,000 to 2,500 m - on human health, regardless of whether you are a resident, visitor or sports enthusiast. Several factors may be involved such as lower oxygen availability or hypoxia, increased air quality and increased solar radiation.

Researchers will focus on these specific factors in relation to health in general, the prevention of some diseases, in particular cardiovascular and respiratory diseases, but also in slowing down their progression.



Immerse yourself in the Grandes Rousses landscape

OISANS - VAUJANY

The resort-village of Vaujany faces the Grandes Rousses mountains: climb higher and discover the most beautiful peaks: Mont Blanc, Grand Paradis, La Meije, Les Ecrins. You can quickly reach an altitude of more than 3,300 m by cable car and take advantage of the guaranteed abundant snow and breathtaking landscapes: eternal glaciers, spruce undergrowth and endless expanses of deep powder.

www.vaujany.com

Discover ski touring in Oz-en-Oisans

OISANS - OZ

Oz has been the home of ski touring for a long time, with the Pyramide d'Oz ski mountaineering race running since 1997. The event is one of those historic races that started with a handful of enthusiasts and then became a major event on the world calendar.

A permanent ski touring course of 2.5 km with 250 m of vertical drop is accessible in the Alpette and Grandes Rousses sector. This is an ideal route for learning and practising ski touring on a safe, marked itinerary. The trail is located in a secure off-piste area at an altitude of 2,000 m on the Plateau des Lacs des Petites Rousses.

Specific ski passes for ski tourers are available from the local ski lift company.

www.oz-en-oisans.com

Discover ski touring with Les 2 Alpes mountain guides

OISANS - LES 2 ALPES

The resort of Les 2 Alpes offers three trails designed for ski touring. One course on the side of the Diable valleys, another from the Super Venosc chairlift (Vallée Blanche sector) and a third from the Vallée Blanche chairlift. The guide office and the various ski schools offer lessons to beginners in ski touring with beautiful supervised ascents, or even an unforgettable adventure under the stars: an unusual and memorable experience. Climbing up the slopes with a head torch is a must in Les 2 Alpes!

Several outings for both easy and more challenging levels are available with the added bonus of having dinner or a picnic at altitude followed by a gentle ski down to the resort. Information and reservations at the Les 2 Alpes guide office: 04 76 11 36 29

www.guides2alpes.com

Ski touring and science at the Col du Lac Blanc

GRANDES ROUSSES - ALPE D'HUEZ

The Col du Lac Blanc is the highest registered route in Alpe d'Huez and is the site of the Centre d'Etude de la Neige (Snow Study Centre), where sensors are tested to monitor and gain in-depth knowledge of the snow and its characteristics. The south-facing Col du Lac Blanc also provides an opportunity for in-depth studies on the effects of wind on snow crystals, their transformation and effects on the risk of avalanches.

www.alpedhuez.com



The Nordic ski area of Beldina – Les 7 Laux

BELLEDONNE - LES 7 LAUX-PRAPOUTEL

Lying between 1,350 and 1,450 m above sea level, the Beldina Nordic domain near Prapoutel/Les 7 Laux offers around 15 km of cross-country trails. Five trails of varying levels give everyone a chance to have a go at cross-country skiing at their own pace:

- 1 green trail «La carabistouille» offers a 3 km loop
- 1 light blue trail of «La myrtillette» offers a 4.3 km loop
- 1 dark blue trail «Tour du pré de l'Arc» is 5 km long
- 1 red run «La Beldina» has a 6 km loop
- 1 black trail 'le défi de Beldina' offers a short but more technical course

Legend has it that this Nordic area is closely watched over by elves and goblins!

www.les7laux.com

Winter walk to the Chalet de la Valérie – Vaujany

OISANS - VAUJANY

Standing in a clearing, facing the Grandes Rousses massif and offering a breathtaking view of the Vaujany valley, the Chalet de la Valérie is an alpine chalet used by shepherds in summer. A peaceful place, well suited to relaxing and listening to the sounds of nature, it makes for a pleasant walk on the southern side of the resort, away from the hustle and bustle of the pistes.

Ski touring by starlight – Chamrousse 1650

BELLEDONNE - CHAMROUSSE 1650

Awarded the «best ski touring itinerary» at the 2019 Ski Touring Trophies, this multi-activity night hiking itinerary is for ski tourers who want to enjoy a nocturnal touring activity from 6 pm to 10 pm in safety. The resort of Chamrousse has created a specific itinerary, with both ascent and descent, that does without the need for a piste basher with a cable winch. Using this itinerary, however, remains the skier's responsibility who must still beware of the possible presence of a piste basher. This is a safe and secure mountain for everyone. Itinerary of about 3 km, 600 m of difference in altitude and some berms: Gaboureaux trail (departure of the gondola) > Bascule > Crêtes trail to the Croix de Chamrousse. Access: Foot of the slopes at Recoign.

www.chamrousse.com

Immersion in nature

Breathing and cardiac coherence... at altitude - Les 7 Laux

BELLEDONNE - LES 7 LAUX

Cardiac coherence is a breathing method that regulates the heartbeat in times of stress and intense emotion. A universal health tool that anyone can use, it is simple and easy to introduce to help you achieve a more balanced daily life. Practised outdoors, with rhythm variations, energising, relaxing and balancing, breathing associated with movement will allow you to harmonise your body and mind to the outside environment.

www.fabiennehelip.com

"Snowga", yoga on snow at 2000 m altitude - Oz en Oisans

OISANS - OZ EN OISANS

Snow yoga allows you to experience yoga while enjoying fresh mountain air and exceptional panoramas in an unforgettable setting. Reduce stress, harmonise body and mind, meditate, improve tone, flexibility and balance - yoga on snow brings a feeling of well-being with an exceptional setting in the heart of our mountains. At the beginning of the session, Élodie accompanies the yogis on the ski lifts to the Plateau des Lacs. Each practice is adapted for everyone there, whether you're an experienced yogi or an amateur - so you don't need to be able to touch your toes to be eligible. Gently loosen up your body and legs in a fun way. Élodie keeps a watchful eye on everyone to make sure you feel comfortable, and can relax and enjoy.

www.oz-en-oisans.com



Le Pré de la Pierre, Oz-en-Oisans

OISANS - OZ-EN OISANS

This exceptional setting deep in the heart of nature, 400 m from the resort of Oz-en-Oisans, is a little over an hour's walk by snowshoe with a maximum difference in altitude of 200 m. From this clearing, you have a splendid view of the Belledonne mountain range and the Eau d'Olle and Romanche valleys. The ESF ski school in Oz offers snowshoe outings at sunset so you can admire the scenery from the Pré de la Pierre and share a moment over a hot drink.

04 76 79 85 29

www.skischool-ozenoisans.co.uk

See the mountain differently



Experience the mountains of Isère in a thousand different ways. From unusual activities to quirky accommodation and wellness, winter in Isère this year can be enjoyed off the beaten track.

Unusual activities

1. Staying in a caravan in the heart of nature – Camping des 7 Laux

BELLEDONNE - LES 7 LAUX

Breathe in mountain air while enjoying the calm of the surroundings, and discover the riches of the natural world around you. The caravan is based in the Belledonne area at an altitude of 950 m, in a spacious campsite offering a natural atmosphere. This charming, cocooning gypsy caravan was crafted entirely by artisans from the north of France using regional woods selected for their quality. Seven varieties of wood make up the caravan, insulated with 100% natural wood and flax fibres. [06 09 89 52 40](tel:0609895240)

www.campingles7laux.fr

2. E-Trott'athlon in Autrans

VERCORS - AUTRANS

Experience the thrill of an all-terrain electric scooter combining biathlon shooting with an optical rifle. Starting from the age of 10, on a choice of two pistes, whether you want simply to discover the sport, enjoy it together as a family or take on a challenge, there are several ways you can take part depending on your mood. In groups of 8 to 10 people, the one-hour package at 25€/person allows you to take over the circuit and, with sessions on electric scooters, biathlon rifle shooting, and timed laps combining scooters and prone or standing shooting, you can fully enjoy this new experience. [06 02 08 53 00](tel:0602085300)

etrottathlon@gmail.com

3. Live like a trapper for an evening

OISANS - OZ EN OISANS

A unique experience with mushers Erwin and Barbara and their Siberian huskies.

Hiking with huskies at sunset on snowshoes and dinner on a wood fire in the heart of the forest. A 'cani-balade' on snowshoes is a moment of intimacy with the dogs, supervised by a musher. Equipped with a harness and connected to the hikers, the dogs accompany you on a long walk in the thick of nature. [06 95 31 93 96](tel:0695319396)

www.ranchdeloisans.com

4. Discovering chamois on a nature hike in Les 2 Alpes

OISANS - LES 2 ALPES

During this snowshoe hike, you get to observe chamois from a distance in their wintering area. What could be more amazing than seeing chamois in real life and learning more about how this distinctive mountain animal adapts to the mountain territories? This snowshoe hike observing this unique animal lasts 2.5 hours on easy terrain (100 m difference in altitude). Organised by the Mountain Guide office of Les 2 Alpes, the outing is certified «Esprit Parc National», the collective trademark of the national parks. *For more information, contact: Bureau des Guides des 2 Alpes - [04 76 11 36 29](tel:0476113629)*

www.guides2alpes.com/en

bdg2alpes@gmail.com

5. First steps as a mountain rescuer: training cours in mountain management, snowology training and avalanche rescue in Saint-Pierre de Chartreuse

Thanks to mountain professionals from the Cartusiana mountain office or the Alpes Ascensions agency, you can learn how to become a competent mountain rescuer by training in avalanche risk management and searching for victims. Understand the basics of avalanche risk management while snowshoeing or skiing: trip preparations, practical snowology and safety in snowy terrain are essential elements for mountain rescues. Knowing how to use equipment (including the avalanche transceiver), well-tested procedures and good group management are key elements that can help an avalanche victim survive. Trainers are authorised by ANENA (National Association for the Study of Snow and Avalanches).

www.cartusiana.com

Pascal Bonino, a passionate cabinetmaker and designer with a taste for beautiful things, is the creator of Wood & more: «I've had a varied professional career with lots of experience in many different fields: I've always been rigorous in the way I carry out my projects, and I've listened carefully to what others have to say. Travelling around the world, discovering new spaces, meeting the Other have all been a source of inspiration. My great appreciation of the bounty of nature, the beauty of its materials and forms - my sense of perception has been honed over the years. Eventually my taste for beautiful things, combined with my experience, prompted me to take up the profession of cabinetmaker-designer. I continue to follow the Path of Beauty daily.»

www.wood-more.com

A moment of wellbeing: wellness areas & spas

Bédina Spa, wellness centre

BELLEDONNE - LES 7 LAUX

Rooted in age-old beauty traditions, the Bédina Spa has selected ointments whose extreme sensory qualities bathe your body and mind in nature bringing an ultimate feeling of well-being. Discover the honeyed, fruity, spicy scents of the Orient, as well as traditional Indonesian spa rituals. Succumbing to the refinement of Japanese-style treatments is now a possibility. And all only 40 minutes from Grenoble in the Belledonne mountains - in the 'warmth' of the snow. [04 76 40 41 42](tel:0476404142)

www.bedinaspa.com

Spa de la Fare

OISANS - VAUJANY

The Pôle Sport et Loisirs spa has everything you need to unwind and relax. The relaxation area includes a sauna, hammam, jacuzzis and a herbal tea room. Treatments are also available: balneotherapy, hydromassage table, facials, massages. Massages, facial and body treatments available include: Ayurvedic massage, Californian massage, Swedish massage and hot stone massage guarantee a moment of timeless relaxation. [04 76 11 11 90](tel:0476111190)

piscine@mairie-de-vaujany.fr



SEE THE MOUNTAIN
DIFFERENTLY

Isère's Scenic Lookouts

These four spots, well known to locals and envied by our neighbours, promise breathtaking views over the Isère region!

Pic Blanc

OISANS - ALPE D'HUEZ (3,330 M ALTITUDE)

High up in the Grandes Rousses mountain range, the Pic Blanc offers an exceptional panorama over one-fifth of the whole of France! Even the sun shines 300 days a year... During the winter, its two legendary pistes (the Sarenne and the Tunnel) make it a skier's paradise, and the cable car that runs to its summit has played a large part in its fame.

Ecrins Lookout

OISANS - LES 2 ALPES (3,400 M ALTITUDE)

This panoramic footbridge is mounted on the summit of the Soreiller glacier. Seven metres long, it overlooks the Selle valley at an altitude of 1,500 m, and provides a breathtaking view of the finest surrounding peaks. In winter, you can ski to this viewpoint from the top of the Puy Salié ski lift, or walk to it all year round from the funicular.

The resort of Chamrousse

BELLEDONNE - CHAMROUSSE (2,250 M ALTITUDE)

This is THE historic resort of the 1968 Winter Olympics, made famous thanks to French alpine ski racer and three-time gold medalist Jean-Claude Killy. Lying at the edge of the Belledonne mountains, it serves up a unique panorama of the Vercors, the Chartreuse, the Trièves and the iconic Mont Aiguille, as well as the Isère valley. Chamrousse is the favourite hangout of Grenoble's residents. The highest point, the Croix de Chamrousse, lies at an altitude of 2,250 m.

Vertige des Cimes

VERCORS - LANS-EN-VERCORS (1,715 M ALTITUDE)

This 2m-high observation deck stretches over a 300m high drop! The sensation of "stepping into the void" is incredible. From here you get an incredible 360° view from the Chartreuse to Mont Blanc, taking in Grenoble, the Belledonne, Oisans and Taillefer mountain ranges. Access the walkway on foot or skis from the top of the Combe des Virets ski lift.



© JOCELYN CHAY

Winter with the family



© EUROPE

Making the most of winter in the mountains with your family is the ideal way to recharge your batteries and experience a whole new world. The resorts of Isère are brimming with specially prepared activities.

Things to do with the family

Photo trail on the pistes in Alpe d'Huez

Head off in search of mystery photos and then take some of the same shots yourself. Have fun (re)discovering the pistes of Alpe d'Huez Grand Domaine ski area in a unique way. Once you've finished the course, meet up at the Tourist Office for a moment of family fun.

www.alpedhuez.com

Wiz Luge: toboggan run on rails for the whole family

BELLEDONNE - LES 7 LAUX

Enjoy the thrill of sliding and the excitement of bends, tunnels, twists and bridges on Les 7 Laux rail sled. Based in Le Pleyne, the Wiz Luge is a bobsleigh-type sled mounted on rails, descending 700 metres, with speeds of up to 40 km/hour through the forest and landscapes of the Belledonne on a fantastic winding course. You can ride the Wiz Luge in complete safety thanks to seat belts, an anti-derailment system, braking facilities and an anti-bumping mechanism to prevent you from crashing into another car. Whether on your own or with your family, the four-season sled guarantees a fun ride and memorable moments.

www.les7laux.com

Sky-high dining in the Enversin cable car

OISANS - VAUJANY

Take a seat in a comfortable cabin and enjoy a fondue in the Enversin cable car while admiring the scenery as it passes by! Treat the whole family to a rare evening out, while enjoying a mountain meal prepared by «Affaire de goûts» as you fly over the ski area. Departure from the quayside in Vaujany from 6.30 pm to 8 pm - 6 places per cabin.

www.oz-vaujany.com



Family stays

Le Sardonnier

OISANS - OZ EN OISANS

Set in a charming hamlet in Oz, this chalet is 10 km from the resort. The chalet combined with an apartment has room for more than 20 people on half-board or self-catering with a fully equipped kitchen. A large vaulted room of 80m² with a lounge around the fireplace, and a dining room have a capacity for about 25 people. A sauna is also available.

www.le-sardonnier.com

Marie Barnier House in Autrans

VERCORS - AUTRANS

This is the story of a family from the Vercors that has been in business for four generations. Since 1937 when Marie Barnier bought it, the former coaching inn in the village centre of Autrans has never stood still. At first, it was a small hotel with 6 rooms, which gradually grew to support the development of cross-country skiing at the time of the 1968 Grenoble Olympics. Then with the first alpine ski pistes, in the 1990s it became a 29-room hotel-restaurant*** with an indoor swimming pool, a relaxation area with a hammam, sauna, spa and a massage room. The restaurant serves a gourmet Dauphinoise menu. Recently, at the end of 2020, its continuous evolution resulted in further modifications to satisfy changing expectations: no longer strictly a hotel but a «new» more independent residence with rooms, suites and flats, accompanied by a breakfast and takeaway service, access to the indoor swimming pool, spa and relaxation area is still provided and exclusively reserved for our guests. To celebrate this new change of direction, the Hotel de la Poste has become the Maison Marie Barnier. **04 76 95 31 03**

www.maisonmariebarnier.com

Gite La Résilience

VERCORS - AUTRANS

This two-storey house is adapted for people with reduced mobility, mental, visual and auditory disabilities. With a total surface area of 110 m², it can accommodate up to 12 people. The gîte has a spacious living room, an open kitchen and a private terrace of 30 m² facing south-east with a view of the ski pistes. The gîte has four bedrooms: on the first floor are two bedrooms, one of which is adapted for people with disabilities; on the second floor are two further bedrooms. In total, the guesthouse has two bathrooms, two toilets and storage space for ski equipment. Guests can easily park their cars in the large outdoor car park next to the house. **07 68 58 38 68**

www.la-resilience.com

Le Chalet Augustin

OISANS - VAUJANY

The charming 4-star Chalet Augustin sits right in the middle of the village resort of Vaujany. Built in old wood and stone, this individual chalet offers all the comforts of home. Sleeping 10/12 people, there are three double bedrooms with their own walk-in shower. A bedroom with three single beds as well as a large mezzanine with a double bed and two sofas are also available. The chalet has a sauna, garage, fireplace, large terrace with panoramic views of the Grandes Rousses, barbecue and ski locker service. Open all year round: 2 nights minimum in the off-season, from Saturday to Saturday in the winter season. **06 63 06 82 96 - 06 82 98 13 98**

chalet.augustin@gmail.com

La Ferme Rony in St-Nizier-du-Moucherotte

This farmhouse-inn lies at an altitude of 1,100 m in the Vercors Regional Nature Park. On the guest table are home-cooked meals, made from local and organic products from the farm. New this season: camping or chalet-tipi accommodation.

www.fermerony.fr

Les Terrasses du Collet

BELLEDONNE - COLLET D'ALLEVARD

The chalet village «Les Terrasses du Collet» offers chalets for 4 to 16 people, ideal for groups wishing to stay at the foot of the pistes.

In an unspoiled setting less than 300 m from the ski lifts, the chalets all offer a breathtaking view of the Belledonne and Chartreuse massifs. A bar-restaurant and a spa complete the offer. **04 76 72 35 13**

www.les-terrasses-du-collet.com

Isère, a land of culture



PIERRE JAVET

From Grenoble to Vienne, by way of the department's museums, Isère is a land of history and culture. Don't miss the chance to discover its heritage on the way to the mountains.

ISÈRE,
A LAND OF CULTURE

Grenoble and Vienne

Explore Grenoble, a city that is two millennia old, at leisure through its ancient heritage, its innovative architecture and its museums. It is a city as rich in culture as it is in all cultures. From avant-garde galleries to national theatres, Grenoble proudly enjoys a position that is certainly unique in France. At the heart of a metropolis of 450,000 inhabitants, Grenoble enjoys a backdrop and environment that is favourable to culture in all its forms, thanks in part to the appeal of its natural setting and to the rapid economic and urban development that took place in the 20th century.

With a rich history of over 2,500 years, Vienne has 45 monuments and historical sites that are a testament to this heritage. More than 500,000 visitors come each year to discover its extraordinary past, from the Gauls to the industrial era via the Middle Ages. Vienne has a flourishing cultural life, giving residents and visitors a wide choice of top quality events all year long. Among these, the Jazz à Vienne Festival, created in 1981, is a major cultural event in Auvergne-Rhône-Alpes and the fifth largest festival in France attracting more than 215,000 festival-goers each year, who come to meet more than 1000 artists.

Isère is fortunate to have a number of departmental museums within its boundaries. Access to all these museums is free.

Here is a selection:

MUSEUM OF THE FRENCH REVOLUTION (MUSÉE DE LA RÉVOLUTION FRANÇAISE)

DOMAINE DE VIZILLE

Created in 1983 by the Department of Isère for the French Bicentenary in 1989, the Museum of the French Revolution, gives a new perspective on this pivotal period in French history, based on the artistic achievements it produced at the time and since. The museum provides a critical approach and a balanced view of art and history.

MUSÉE DE L'ANCIEN ÉVÊCHÉ

GRENOBLE

Set in the former bishop's palace in the heart of Grenoble's historic centre, The Old Bishop's Palace Museum is protected as a Historic Monument. The site's basement contains archaeological remains of great importance, bearing witness to the city's religious history: the baptistery dating from the earliest Christian times. The upper floors of the palace, now a museum, house the exhibition L'Isère en histoire (Isère in History), taking visitors on a chronological journey through the region, its history and its people.

SAINT-LAURENT ARCHAEOLOGICAL MUSEUM

GRENOBLE

A major archaeological site (excavated from 1978 to 1995) in one of the oldest districts of Grenoble, the Saint-Laurent Archaeological Museum takes you on a journey through nearly two thousand years of history. The visitor enters the centre of a funerary and religious site famous for its 6th/7th-century monument: the crypt of Saint-Oyand. The history of this place and of those who lived here is brought to life using multimedia tools that highlight the evocative power of the remains, bearing witness to the development of funerary practices, beliefs and customs.

CHAMPOLLION MUSEUM 2021

VIF

On 5 June 2021, the Department of Isère opened its 11th departmental museum in Vif, south of Grenoble, the Champollion Museum - the origins of Egyptology. Housed in the Champollion family estate, the museum is dedicated to the work of the Champollion brothers and the birth of Egyptology.

MUSÉE DAUPHINOIS

GRENOBLE

On the slopes of the Bastille in Grenoble in the convent of Sainte-Marie d'en-Haut, the Musée Dauphinois examines various periods of Alpine history and reflects on the present day. Two or three exhibitions a year, accompanied by books, conferences and debates, explore the fields of archaeology, regional, rural and industrial heritage.

HECTOR-BERLIOZ MUSEUM

LA CÔTE SAINT-ANDRÉ

Housed in the birthplace of the great Romantic musician in La Côte Saint-André, the Hector Berlioz Museum commemorates his life and work. Period furniture, original scores, correspondence and musical instruments belonging to Hector Berlioz, as well as paintings and engravings fill the rooms of the house, which are still decorated in their original style. Regular temporary exhibitions enrich the cultural programme, while the auditorium plays the composer's works.

musees.isere.fr

Flavours of Isère: regional products



OLIVIER TOUSSAINT © LE CASSINI

Their names are well known across the land: Grenoble walnuts, gratin dauphinois, Saint-Marcellin, Bleu du Vercors-Sassenage, Bonnat chocolates: all these products are part of Isère heritage. Coming from the four corners of the department, some of them have an international reputation. The land from which they come and the know-how of their producers are unique.

They have inspired some of the great names in gastronomy, one of whom is a pioneer in this field. It was in fact in Vienne, with Fernand Point, that great French cuisine was born in the 1930s. He was the first French chef to be awarded three stars in the Michelin guide in 1933, and he kept them for 53 years. Today, these products are complemented by 1,000 products bearing the ISHERE label, the agricultural brand of the Isère Department. Discover a huge range of flavours for all palates.

FLAVOURS OF ISÈRE:
REGIONAL PRODUCTS

Emblematic products

The Grenoble walnut

The Grenoble walnut was awarded A.O.C. (Appellation d'Origine Contrôlée) in 1938, a world first for a dried fruit. There are three varieties: Franquette, Mayette and Parisienne. Recognised for the quality and richness of their proteins, minerals and vitamins, walnuts are sold fresh or dried.

www.aoc-noixdegrenoble.com

Saint-Marcellin

This small cheese, emblematic of the department, obtained its Protected Geographical Indication (IGP) in 2013. It takes its name from its birthplace: the town of Saint-Marcellin, between Grenoble and Valence.

www.fromage-saint-marcellin.fr

Bleu du Vercors-Sassenage

Produced since the Middle Ages, it was only in 1993 that the milk producers of the Vercors Milk Cooperative, proud of their history, took destiny into their own hands and decided to apply for an «Appellation d'Origine Contrôlée» for the local cheese: Bleu du Vercors Sassenage.

www.vercorslait.com

Ravioles

A speciality of the Dauphiné region, ravioles are squares of pasta stuffed with cheese and parsley and cooked in water. A perfect modern product, it is quick and easy to prepare. This tasty dish can be served in a thousand ways

www.raviole-maison-rambert.com

Chartreuse liqueur

The Chartreuse monks are the only ones who know the names of all 130 plants that make up Chartreuse and how to blend and distil them. Chartreuse Verte (55°) is the only naturally green liqueur in the world. A divine secret!

www.chartreuse.fr

Wines of the Rhône Valley

The Rhône Valley stretches from Vienne in the north of Isère to Nîmes in the Gard, a vast area of unique soil. A former sinkhole long filled in by the Mediterranean, its soils are made up of four types of rock: granite, sandy silica, limestone and clay. This parent rock plays an essential role in regulating the water supply to the vines and gives the Rhône wines their aromas and flavours. The appellations of the Rhône Valley are among the most prestigious in the world: Côte-Rôtie, Condrieu, Vienne wines. Over the years, these wines have found their place on the tables of the greatest restaurants.

Vitis Vienna, a vineyard in full renaissance

The Vitis Vienna vineyard is about 30 km south of Lyon, in the communes of Vienne, Seyssuel and Chasse-sur-Rhône. The origin of this vineyard goes back to Roman times. Devastated by phylloxera and then forgotten, it owes its rebirth to a community of winegrowers from the Rhone Valley who discovered some of the best soils. Thanks to their work and passion, they now produce wines of the highest quality.

www.vienne-condrieu.com

BEER

Rhône-Alpes is the leading region in France when it comes to the number of craft breweries operating: more than 60 exist, almost all of which are microbreweries. In Isère, there are nearly 30 brewers producing beer.

Brasserie Artisanale du Dauphiné in Saint-Martin-d'Hères, near Grenoble

Created in 2002 by Vincent Gachet, Mandrin beer, whose name is inspired by a famous 18th-century smuggler, has a strong identity rooted in the local area.

www.brasserie-du-dauphine.fr

Goodwin Brewery, English beers «made in Oisans» in Bourg-d'Oisans

Nostalgic for his native country's beers, Chris Goodwin, an Englishman who has been living in the Oisans for 25 years, produces a range of beers in 33cl and particularly 50cl bottles - the size of a famous pint.

www.goodwinbrewery.com

Vercors beer in Autrans, in the Vercors

Created by Martin Torès, an independent brewer, Vercors beer is available in seven varieties, each with its own specific flavour. This mountain beer, brewed with water from the Vercors, is certified organic, top-fermented, unfiltered and unpasteurised.

www.biereduvercors.fr

Alpine whisky

The Domaine des Hautes Glaces, a mountain farm-distillery, on the slopes of the Obiou in the south of Isère, was born from an encounter between two epicureans, alchemists of taste and flavours and organic farmers in the Trièves. The Domaine des Hautes Glaces is one of the rare distilleries to grow and malt its own cereals, and its production is entirely certified organic. Probably the smallest, it's the only one to use renewable and local energy as the main source of energy. From the cereals cultivated and processed here, the Domaine develops a range of whiskies and woskas© made with respect for the land, the people and the time.

www.hautesglaces.com

PORTRAIT

Stéphane and Sophie Jay at the Colombier distillery

Pear brandy in France was born in Villette-de-Vienne, at the home of Joannès Colombier who, thanks to his special status as a distiller, distilled part of his production of Williams pears. Fernand Point, the famous restaurateur of La Pyramide in Vienne and a friend of Joannès Colombier, was so enthusiastic about the smoothness and fruitiness of the product that in the 1930s he asked him to save some of the produce for him. Today, Sophie and Stéphane Jay have taken over the entire operation and distillery and continue to uphold the know-how and quality that have made the Colombier brand famous. Secrets of the trapped pear: Each year, for as long as the Maison Colombier has existed, the producers place bottles in the trees to lock in the pears. This process is carried out at the beginning of May when the pears are just forming. They carefully place a small pear in the bottle by the neck and hang it upside down so that rainwater can't get in.

04 74 57 98 05

www.poire-colombier.com

ISHERE PRODUCTS: FROM NATURE TO THE PLATE...

Nearly 1000 products bear the ISHERE trademark ISHERE

The brand for agricultural products from Isère, is the first brand in France to guarantee both the territorial origin of local quality products and the fair remuneration of producers. The beneficiaries of the ISHERE brand - farmers, craftsmen and food companies - commit to using ingredients such as fruit, vegetables, meat, eggs, milk or honey from Isère farms for their farmhouse or craft products.

Today, nearly 1,000 products are ISHERE approved, reflecting the variety of agriculture and artisanal know-how in the region: fruit and vegetables, meat and charcuterie, honey, fish, cheese, dairy products, bread. The products are for sale in Isère supermarkets that promote local products directly from the producers.

produits-locaux.ishere.fr

Maxime and Renaud, spirulina producers in Chartreuse

Maxime and Renaud embarked on an ambitious project which came to fruition in 2017: to become producers of spirulina in Chartreuse. On the farm is a greenhouse of 1200m² containing about 500m² (soon to be 750m²) of growing tanks. An operating building contains a laboratory for pressing, drying and packaging spirulina under strict hygienic conditions. A reception and sales area is also available where they welcome visitors and share their beautiful work. Passionate about self-construction, the couple have built most of the farm's facilities and working tools themselves. They chose passive materials that respect the environment: the farm is made of wood frames and insulated with straw bales. The farm can be visited all year round.

spirulinedechartreuse.com / 06 59 79 96 33

ALPES ISHERE boutique The Village-Villefontaine

The ALPES ISHERE and ISHERE (agricultural products) brands promote the excellence of the Isère region for local residents and businesses as well as for visitors. Isère Attractivité is opening a shop within the brand village. Based in the communes of Villefontaine and La Verpillière, The Village helps to develop the sale of Isère products, in particular ISHERE, on a short supply chain and to promote the region. Opened in May 2018, The Village is a 24,000 sq. m. retail space that currently has 108 shops (125 stores are planned for the future) focusing on high-end brands with excellent service levels. The site is close to the airports of Lyon and Grenoble, as well as other major cities such as Chambéry and Geneva, putting it within easy reach of the Isère ski resorts.

ALPES ISHERE store: opening autumn 2021

Michelin stars

Isère has seven Michelin Star restaurants: five have one star and two have two stars in the Michelin Guide. Expect outstanding gastronomic moments.

Stéphane Froidevaux, chef at Fantin Latour* in Grenoble, wins his first star

Trained by Marc Veyrat, Stéphane Froidevaux draws his inspiration from the mountains. He is expanding his style as a chef and refining his cuisine, armed with the utmost authenticity. His work is meticulous, tasty, creative without being wild and always bears the mark of his relationship with nature, just like the herbs and flowers he brings back from foraging.

His restaurant is housed in a former museum, a magnificent 19th-century mansion in the heart of Grenoble, and is a haven of peace with a flower garden where a rooster and a few hens peck and where there are also rabbits and beehives. It joins the ranks of six other illustrious Michelin-starred restaurants in the Isère: the P'tit Polyte-chalet Mounier in Les 2 Alpes, the Domaine de Clairefontaine in Chonas-l'Amballan, l'Émulsion in Saint-Alban de Roche, l'Ambroisie in Saint-Didier de La Tour, and the two-starred restaurants of chefs Patrick Henrroux for La Pyramide in Vienne and Christophe Aribert for the Maison Aribert in Uriage.

www.fantin-latour.fr



Calendar of major events



© IMAGES ET RÊVES

CALENDAR OF MAJOR EVENTS

La Foulée Blanche

DATES TO BE CONFIRMED.

Every January, the Foulée Blanche festival hosts four days of Nordic skiing, new discoveries, challenges and festivities. In the heart of the protected landscapes of the Vercors mountains, on one of the most beautiful Nordic sites in Europe, the Foulée Blanche invites the public to take part in events and activities based on the values of this winter sport. The Foulée Blanche brings together several thousand Nordic skiers, from beginners to the elite. Different courses are available to anyone, depending on their skiing and fitness levels.

www.lafouleeblanche.com

Les 7 Laux resort celebrates its 50th anniversary

DATES TO BE CONFIRMED

Several events will take place during the winter and summer seasons in all the villages of Les 7 Laux: Prapoutel, Pipay, le Pleynet. Exhibitions, celebrations, but also sports, concerts and unusual events: All year round, there will be something for everyone. Joie de vivre is the key phrase for this anniversary, celebrating the development of the resort and shaping the future!

International Comedy Film Festival, in Isère:

17-23 JANUARY 2022 - ALPE D'HUEZ

The International Comedy Film Festival in Alpe d'Huez is a must-see event, featuring both French and international short and feature films. All screenings are free, subject to availability. Discover future comedy successes by day and by night, as well as surprises that spotlight new talent!

www.festival-alpedhuez.com

Tomorrowland Winter

19-26 MARCH 2022

In March 2022, Tomorrowland will once again transform the resort of Alpe d'Huez into a fairytale world, creating an unforgettable holiday experience! Join the People of Tomorrow in the beautiful French mountains. To celebrate the return of Tomorrowland Winter, these internationally renowned French artists will perform exclusively from Alpe d'Huez: Ofenbach, Klingande, and Kungs x Martin Solveig.

www.tomorrowland.com

EXHIBITIONS

Pierre Bonnard, the Colours of Light at the Musée de Grenoble

30 OCTOBER 2021-30 JANUARY 2022

For the first time, the Musée de Grenoble, in partnership with the Musée d'Orsay, is presenting a major exhibition devoted to the artist Pierre Bonnard. Bringing together more than 75 paintings and some forty works on paper (drawings, posters, photographs), it offers an original tour covering the whole of his work with, as a common thread, the theme of light and the different colours and shades it took on during his life, depending on the places he visited.

The exhibition is divided into six sections, each illustrating a theme representing the different periods of his work. Two themes are interspersed throughout the exhibition: the first is devoted to photography, an art form that the artist practised mainly with his family from the 1890s to the 1910s, and the second to graphic arts, including a fine collection of drawings that demonstrate the strength and precision of his style. The exhibition culminates in a contemporary perspective with an unpublished series of photographs by Bernard Plossu, recently taken in the painter's house in Le Cannet.

www.museedegrenoble.fr

A Love of Cycling at the Musée Dauphinois in Grenoble

UNTIL 4 JULY 2022

Taking a bike for a spin on the roads. Riding your two-wheeler to work. Venturing out on the world's roads with your touring bike. Racing down the mountain on your mountain bike. Doing tricks on your BMX. For more than 150 years cyclists haven't stopped pedalling.

The exhibition, featuring documents from the collections of several museums, and contributions from public and private players, institutions, associations, individuals, cyclists and non-cyclists, reflects our relationship with the bicycle. Numerous artistic works complete the tour.

musees.isere.fr

Key numbers for winter tourism in Isère

ISÈRE'S IDENTITY CARD



OF THE AUVERGNE-
RHÔNE-ALPES REGION



1.2 million
INHABITANTS



OF THE AUVERGNE-
RHÔNE-ALPES REGION



512 MUNICIPALITIES
120 IN THE MOUNTAINS

SKI ACTIVITIES (WINTER 2018/19)



€ 127.7 million

IN REVENUE FROM SKI LIFTS
+7% par rapport à la moyenne des 4 dernières saisons



#Source : Domaines Skiabiles de France



4.88 million

SKIER DAYS
+3% compared to the average of the last 4 seasons



€ 1.49 million

IN NORDIC SKI FEES
+18% compared to the average of the last 4 seasons



#Source : Nordic' Isère



22

WINTER SPORTS RESORTS SPREAD OVER 4 MOUNTAIN RANGES:
BELLEDONNE / CHARTREUSE / OISANS / VERCORS



1 200 Km OF PISTES

390 SKI LIFTS

25 NORDIC SKI SITES

WINTER TOURIST NUMBERS (WINTER 2018/19)

10.7 million TOURIST NIGHTS

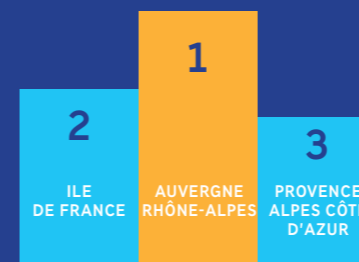
AVERAGE LENGTH OF STAY: 4 NIGHTS

58% SHORT STAYS (<4 nights)

68% NON-MARKET NIGHTS

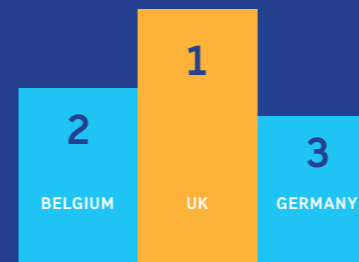
TOURIST NUMBERS

FRENCH VISITORS



- 1ST **35%** AUVERGNE RHÔNE-ALPES
- 2ND **17%** ILE DE FRANCE
- 3RD **10%** PROVENCE ALPES CÔTE D'AZUR

FOREIGN VISITORS



- 1ST **25%** UK
- 2ND **10%** BELGIUM
- 3RD **6%** GERMANY

ECONOMY



€ 1.37 billion
OF TOURISM CONSUMPTION
(2019)

€ 95

AVERAGE SPEND
PER PERSON PER DAY
IN RESORT



24 500
direct jobs

IN THE ACTIVITIES
CHARACTERISTIC
OF TOURISM,
INCLUDING
20,600 SALARIED JOBS



#Source : Isère attractivité, Domaines Skiabiles de France, Nordic' Isère, Kantar TNS, Auvergne Rhône Alpes Tourisme, Acoss

WINTER 2019/20 AND 2020/21: TWO EXTREMELY DIFFICULT SEASONS FOR MOUNTAIN RESORTS

In mid-March 2020, the global coronavirus pandemic put an abrupt halt to a season that had fortunately started so well for Isère ski resorts. The season ended with a 20% drop in the balance sheet. The income from ski lifts fell by -7%, and Nordic ski income by -18%.

With the continued closure of ski lifts throughout the 2020/21 winter season, as well as the closure of bars and restaurants, and restrictions on travel, the overall loss of overnight stays for the Isère department was -45% and the turnover of tourism companies dropped by 830 million euros compared to a normal season. Despite this challenging situation, tourism professionals did their utmost to welcome visitors under the best possible conditions, and numerous activities and new discoveries were offered. Guests took full advantage of the snowy atmosphere, the fresh air and the space they had come for, leaving them with beautiful memories for next year.

The boom in Nordic skiing and ski touring.

Isère sites have exceeded 2.5 million euros in royalties this season, doubling the average turnover of the last 5 years (€1.27 M).

Getting to Isère

By train

Grenoble is easily accessible by train from numerous countries and points of origin. With the TGV, it only takes 3 hours from Paris to Grenoble and 50 minutes from Lyon-Saint Exupéry. From the UK, it is one of the closest destinations to skiing in the Alps.

ACCESS BY TRAIN FROM EUROPEAN CITIES:

- > London : 7h 23m
- > Amsterdam : 7h 24m
- > Brussels: 5h 22m
- > Geneva: 2h 2m

The bus links from Grenoble to the Isère resorts, when coordinated with the train, are an excellent and easy-to-use service - www.transaltitude.fr/en/

By car

The Auvergne-Rhône-Alpes Region has the most complete motorway network in France, which makes Isère easily accessible.

- Grenoble > Lyon 105 km
- Grenoble > Paris 570 km
- Grenoble > Calais 869 km

By plane

GRENOBLE ALPES ISÈRE AIRPORT AT SAINT-ETIENNE-DE-SAINT-GEOIRS

30 min. from Grenoble

Grenoble Alpes-Isère Airport is an easily accessible airport, compact in size, with quick connections to the Isère resorts.

One of the key elements of the airport's strategy, in line with VINCI Airports' own strategy, is the environment. The airport's environmental policy has several focuses: reducing greenhouse gas emissions; the airport has been ACA Level 1 accredited since 2016, confirming the robustness of its carbon footprint assessment; improving waste recovery; and reducing water consumption.

From the outset of the epidemic, Grenoble Alpes Isère Airport implemented the necessary health measures for the benefit of users and passengers, to limit the spread of the virus and provide the necessary information to airport passengers.

www.grenoble-airport.com/en

LYON-SAINT EXUPÉRY AIRPORT

www.lyonairports.com

Regular shuttles between the airports and Grenoble bus station

www.transisere.fr/en



Only 3 hours from Paris

To get around Isère, by train, coach, bus and tram, carpooling or car-sharing:

www.itinisere.fr

ItinIsere app available for free download with Android & Iphone